



...the leaf chain specialists

TRUST IN CONSISTENT QUALITY – RELY ON FB!

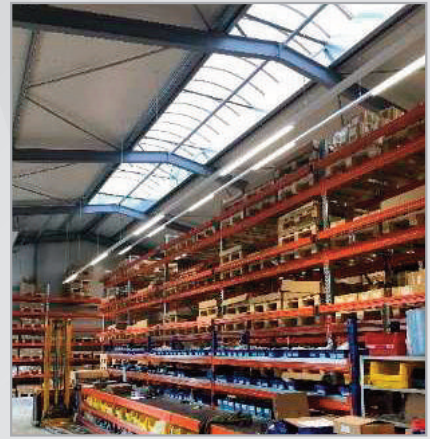


Leaf Chain products for material handling, forklifts & telehandlers



[www.forkliftchain.eu](http://www.forkliftchain.eu) | [contact@forkliftchain.eu](mailto:contact@forkliftchain.eu)

# Wide product range, daily shipments & availability from stock

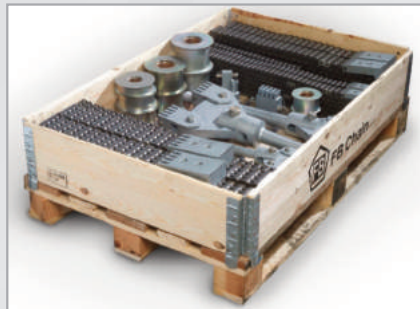


We stock the common types and sizes of leaf chains, connecting pins and anchor bolts to ship to our customers on short notice.



## Package solutions – ready to install

We offer the full package: Leaf chains, anchor bolts and chain anchors, connecting pins and pulleys – ready to install.



## Traceability

Individual batch No. allow us to track and trace the individual production lots.

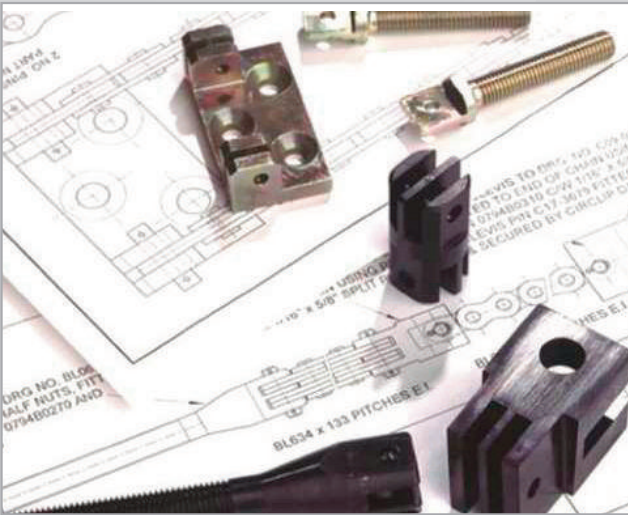


## Supershield chains – corrosion resistant surface treatments



- ▶ Thin layer, non-electrolytic
- ▶ The coating consists of a water based mixture
- ▶ Passivated zinc and aluminium slats in a patented binder
- ▶ Silver coloured
- ▶ Controlled friction numbers
- ▶ No hydrogen embrittlement
- ▶ Good mechanical and chemical resistance
- ▶ Heat resistance like the chains
- ▶ Can be painted over
- ▶ The electrical conductivity corresponds to most applications
- ▶ Low application cost

We support you!



Our well experienced team of technicians supports you in questions of your chain applications, chain design and further questions.

### Test certificates

On demand we supply a test certificate which provides crucial information about the chain's minimum breaking load and proof load.



### CE conformity

FB-leaf chains with documented conformity to European guidelines - another important aspect completing the full quality package of FB.



## THE FB CHAINWEARGAUGE



The only professional wear measuring tool in the market, which indicates the percentage of elongation. A must in every professional toolbox!

How to use the  
FB CHAINWEARGAUGE ?

Please scan the code ▶



# Why FB?

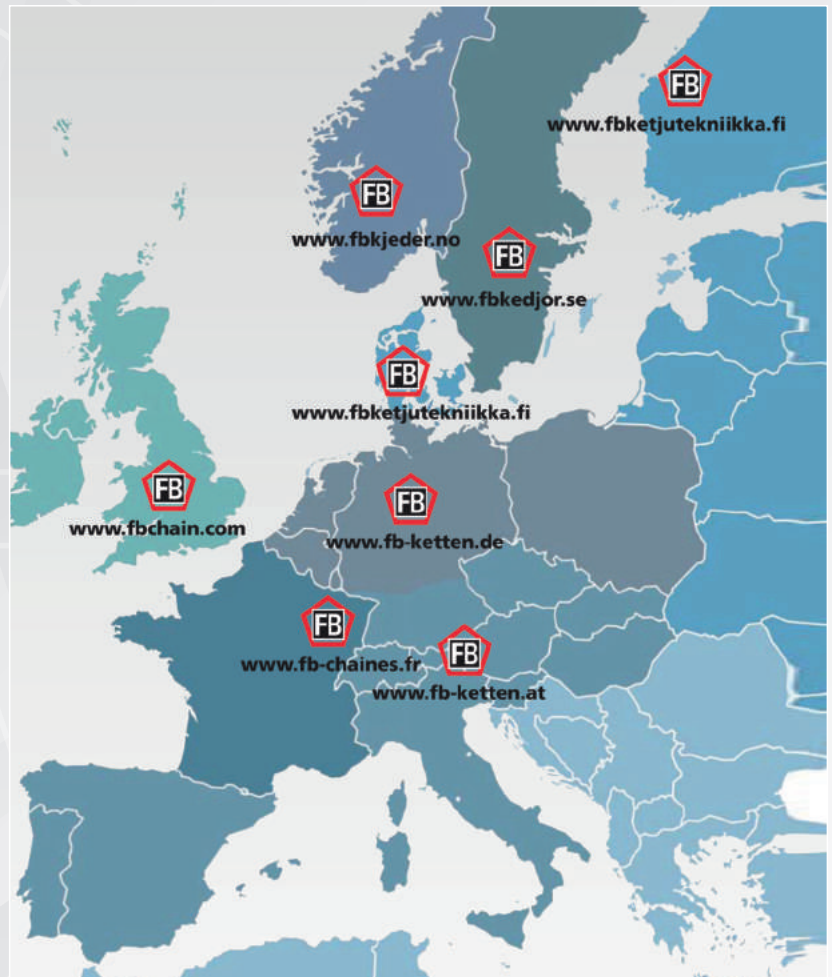
In 1908 we started producing chains in Eskilstuna, Sweden. In 1945 the conveyor chain production in Köyliö, Finland started. Today we produce our FB conveyor chains in Lappi Rauma, Finland, (opened 2019). All FB companies are part of the Swedish Addtech-group ([www.addtech.com](http://www.addtech.com)).



We are well-known for providing exceptional quality and service and working closely with our customers to provide solutions for their applications.

Our main activity is the development and optimization of chain solutions in cooperation with customers. More than 25 well trained and skilled sales engineers over Europe develop customized solutions for the applications of our customers.

- ▶ Big knowledge and experience – high quality solutions
- ▶ Strong service – easy cooperation
- ▶ Wide product portfolio - all common types and sizes available
- ▶ Daily shipments ex stock – quick deliveries
- ▶ Traceable batch control – controlled quality
- ▶ Test certificate for each chain available – for a professional documentation
- ▶ CE conformity – documented conformity to European guidelines



## FB Ketten GmbH

Stakelbrauk 11 | D-59889 Eslohe | Telefon +49 (0) 2973 97914-0 | Telefax +49 (0) 2973 97914-20 |  
[www.forkliftchain.eu](http://www.forkliftchain.eu) | [contact@forkliftchain.eu](mailto:contact@forkliftchain.eu)